



enjoy
your
view



PREMIUM VINYL REPLACEMENT WINDOWS & DOORS

For Replacement



BEAUTIFY YOUR HOME.
SIMPLIFY YOUR LIFE.

At Ellison Windows and Doors, we design premium vinyl replacement windows and doors that lend classic charm to any décor, and that meet — or exceed — the highest energy standards. Whether you're looking for a more comfortable and consistent temperature in your home, a beautiful interior or exterior accent, or simply a lower energy bill, look no further than Ellison Windows and Doors. In all seasons and all conditions, we think you'll like what you see.



SERIES 1800

COME HOME TO LUXURY. If you have an eye for elegance and a need for lasting comfort, look no further. The Ellison Series 1800 blends our highest level of craftsmanship and performance with our widest range of premium enhancements and optional features. From the exclusive InsulKor™ sash reinforcement and foam-filled frame to our eight popular painted exterior colors, the 1800 series offers the finest options for the finest homes.



Scan this QR code to
watch a video about
our **Series 1800**

SERIES 1800

Series 1800 also available in 2- and 3-lite slider windows.

STRENGTH

- Fusion-welded sashes and frame add strength and boost thermal performance.
- $\frac{3}{4}$ " constant force coil balance permits easy sash movement.
- Integrated slim-line lift rail allows you to easily operate sashes.
- External accessory groove accommodates nail fin option.

STABILITY

- Dual push-button night latches provide easy ventilation.
- Dual low profile, positive-action deluxe cam locks enhance safety (2 locks standard at 27 $\frac{1}{4}$ ").

SAVINGS

- Exclusive InsulKor™ polyurethane fiberglass-enriched sash reinforcement for superior thermal and structural performance.
- Low-E Glass with Argon Gas.
- Full vinyl sash dam on sill and high-performance weather stripping protect against air infiltration.
- Full interlocking lock and meeting rail.
- DP 60 rating (window size tested 36" x 74").
- Rubber bulb seal helps block outside air.
- Sloped sill reduces air infiltration and allows for easy water runoff.
- Transferable Limited Lifetime Warranty.
- Lifetime Glass Breakage Warranty.

STYLE

- Contoured sashes create additional beauty for the interior of your home.
- Beveled mainframe offers a stylish exterior appearance.
- Flush tilt latches.
- Extruded full screen comes standard.*
- 4 $\frac{1}{4}$ " frame thickness enhances appearance as well as structural integrity.
- Jamb depth: 3.25".

Options

- **Silent Guard® with noise control STC 34 performance.**
- **Triple-pane, R-5 compliant glass panels with Low-E/Argon Glass or Ultra Low-E/Argon Glass.**
- **Ultra Low-E/Argon Glass** (may be required for ENERGY STAR rating).
- **Low-E Glass.**
- Super Spacer® nXt™ sealant system (standard with triple-pane glass).
- InsulKor multi-cavity foam-filled frame.
- Nail fin accessory for use in remodeling or new construction applications.
- Charcoal aluminum mesh screen.
- Window Opening Control Device (for fall prevention).
- Factory mulling of twins, triples and architectural shapes.
- Obscure and double-strength glass.
- Today's eight most popular painted exterior colors (on white interiors).
- Three interior wood laminates in cherry, light oak and dark oak.
- Additional lock colors to complement any interior color.
- $\frac{5}{8}$ " or 1" contoured, $\frac{5}{8}$ " or $\frac{3}{4}$ " flat, 1 $\frac{1}{8}$ " simulated divided lite, $\frac{5}{8}$ " contoured valance grid.

Note: Manufacturer reserves the right to substitute components as necessary.

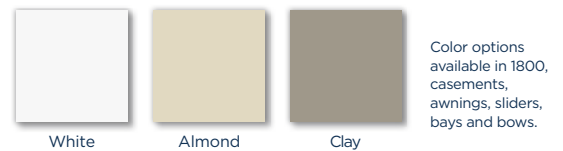
* Screens are not meant to restrain a child from falling through an open window.

** Printing process may affect color shown. Please refer to actual window sample when selecting colors.

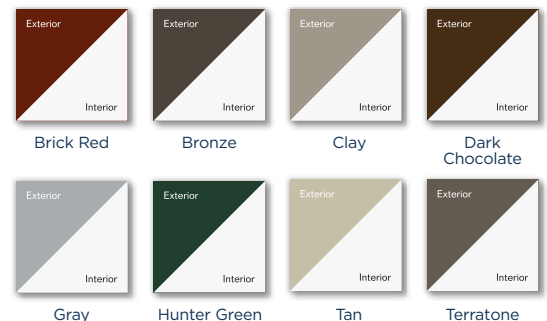
*** Grid offering limited to $\frac{5}{8}$ " contoured or SDL on exterior painted windows.



Vinyl Color Options**



Painted Color Options**



Laminated Color Options**



Lock Options**



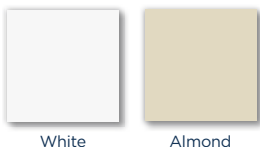
SERIES 1600

Series 1600 also available in 2- and 3-lite slider windows.

SEE YOUR WORLD DIFFERENTLY. At Ellison, we're all about top-of-the-line materials and quality craftsmanship, and our Series 1600 windows are a perfect example. With standard features including elegant rounded sashes and Low-E Glass with Argon Gas, Series 1600 windows are guaranteed to enhance your home while protecting it from cold winter air, hot summer days and high energy costs.



Vinyl Color Options™



Laminated Color Option™



Scan this QR code to watch a video about our Series 1600

STRENGTH

- Fusion-welded sashes and frame add strength and boost thermal performance.
- Constant force coil balance permits easy sash movement.
- Aluminum-reinforced, multi-cavity construction provides additional thermal performance and structural integrity.
- Integrated slim-line lift rail allows you to easily operate sashes.

STABILITY

- Dual push-button night latches provide easy ventilation.
- Positive-action low profile lock enhances safety (2 locks standard at 27 1/4").

SAVINGS

- Low-E Glass with Argon Gas.
- DP 35 Rating (DP 50 optional, window size tested 36" x 74").
- Interlocking sashes keep out drafts.
- Rubber bulb seal helps block outside air.
- Dual-fin weather stripping further reduces air infiltration.
- Insulated glass panels with optimum thermal air space featuring Warm-Edge spacer system.
- Sloped sill reduces air infiltration and allows for easy water runoff.
- Transferable Limited Lifetime Warranty.
- 25-year Glass Breakage Warranty.

STYLE

- Rounded sashes create additional beauty for the interior of your home.
- Beveled mainframe offers a stylish exterior appearance.
- Flush tilt latches.
- Extruded half screen comes standard.*
- Jamb depth: 3.25".

Options

- **Ultra Low-E / Argon Glass** (may be required for ENERGY STAR rating).
- **Low-E Glass.**
- 5/8" or 3/4" flat, 5/8" or 1" contoured, 1 1/8" Simulated Divided Lite or 5/8" contoured valance grids available.
- Factory mulling of twins, triples and architectural shapes.
- Decorative beveled and leaded glass.
- Charcoal aluminum mesh screen.
- Obscure and double-strength glass.
- Window Opening Control Device (for fall prevention).
- Lifetime Glass Breakage Warranty.

SERIES 1300

Series 1300 also available in 2- and 3-lite slider windows.



COMFORT YOU CAN COUNT ON. The Ellison Series 1300 is where affordability meets the durability of all-welded vinyl construction. These windows are built to last, providing your home with attractive, energy-saving efficiency all year round. Low-maintenance needs and custom style options make the Series 1300 a great choice for homeowners with an eye for design and value.

STRENGTH

- Fusion-welded sashes and frame add strength, boost thermal performance.
- Constant force coil balance permits easy sash movement.
- Aluminum-reinforced, multi-cavity construction provides additional thermal performance and structural integrity.
- Integrated slim-line lift rail allows you to easily operate sash.

STABILITY

- Dual push-button night latches provide easy ventilation.
- Positive-action cam lock enhances safety (2 locks standard at 27 1/4").

SAVINGS

- Interlocking sashes keep out drafts.
- Rubber bulb seal helps block outside air.
- Dual-fin weather stripping further reduces air infiltration.
- Insulated glass panels with optimum thermal air space featuring Warm-Edge spacer system.
- Sloped sill reduces air infiltration and allows for easy water runoff.
- Transferable Limited Lifetime Warranty.

STYLE

- Beveled exterior provides for an attractive appearance.
- Flush tilt latches.
- Extruded half-screen comes standard.*
- Jamb depth: 3.25".

Options

- **Ultra Low-E / Argon Glass** (may be required for ENERGY STAR rating).
- **Low-E Glass with Argon Gas** for additional efficiency.
- **Low-E Glass.**
- 5/8" or 3/4" flat, 5/8" or 1" contoured or 5/8" contoured valance grids available.
- Today's 8 most popular painted exterior colors (on white interiors).
- Factory mulling of twins, triples and architectural shapes.
- Obscure and double-strength glass.
- Charcoal aluminum mesh screen.
- Window Opening Control Device (for fall prevention).
- Lifetime Glass Breakage Warranty.



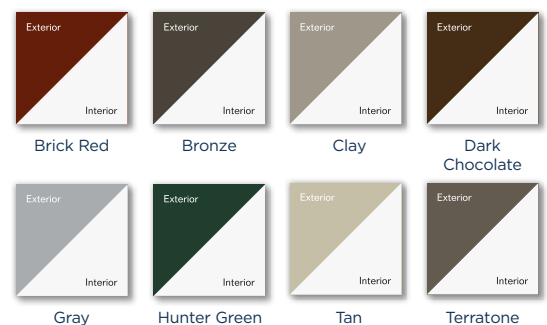
Scan this QR code to watch a video about our **Series 1300**



Vinyl Color Options**



Painted Color Options**



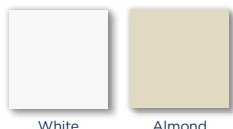
* Screens are not meant to restrain a child from falling through an open window.
** Printing process may affect color shown. Please refer to actual window sample when selecting colors.

SERIES 1100

Series 1100 also available in 2- and 3-lite slider windows.



Vinyl Color Options**



White

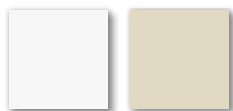
Almond

SERIES 1050

Series 1050 also available in 2- and 3-lite slider windows.



Vinyl Color Options**



White

Almond

STRENGTH

- All-welded frame and sash corners.
- Block & tackle balance system.
- Aluminum-reinforced lock rail and meeting rails add strength.

STABILITY

- Positive-action cam lock enhances safety (2 locks standard at 27 1/4").

SAVINGS

- Factory applied wrap-around foam.
- Bottom sash tilts in for easy cleaning.
- Insulated glass panels with thermal air space featuring Warm-Edge spacer system.
- Sloped sill reduces air infiltration and allows for easy water runoff.

STYLE

- Beveled exterior provides for an attractive appearance.
- Factory-installed half screen comes standard.*
- Head expander and sill angle are included.
- Pre-drilled installation holes.
- Jamb depth: 2.624".
- Transferable Limited Lifetime Warranty.



Factory applied wrap-around foam

Options

- **Ultra Low-E / Argon Glass** (may be required for ENERGY STAR rating; may not be applicable in all zones).
- **Low-E Glass with Argon Gas** for additional efficiency.
- **Low-E Glass.**
- 5/8" or 3/4" flat, 5/8" or 1" contoured, 5/8" contoured valance grids available.
- Custom sizes cut on 1/8" width & height.
- Factory mulling of twins and triples.
- Obscure and double-strength glass.
- Charcoal aluminum mesh screen.
- Lifetime Glass Breakage Warranty.

STRENGTH

- Fusion welded frame and sash corners.
- Block & tackle balance system.
- Dual screw boss, metal reinforced meeting rail provides added strength.

STABILITY

- Sweep lock helps provide a weather-tight seal and added security.

SAVINGS

- Removable, operable sash includes full-length interlock.
- Insulating glass provides energy saving thermal efficiency.
- Sloped sill reduces air infiltration and allows for easy water runoff.

STYLE

- Beveled exterior provides for an attractive appearance.
- Factory-installed half screen comes standard.*
- Modular sized so that rough opening widths for multiple units are easy to calculate.
- Jamb depth: 2.624".
- Transferable Limited Lifetime Warranty.

Options

- **Ultra Low-E / Argon Glass** (may be required for ENERGY STAR rating; may not be applicable in all zones).
- **Low-E Glass with Argon Gas** for additional efficiency.
- **Low-E Glass.**
- 5/8" or 3/4" flat, 5/8" or 3/4" contoured, 5/8" contoured valance grids available.
- Custom sizes cut on 1/8" width & height.
- Factory mulling of twins and triples.
- Lifetime Glass Breakage Warranty.
- Custom sizes available.

* Screens are not meant to restrain a child from falling through an open window.

** Printing process may affect color shown. Please refer to actual window sample when selecting colors.

SERIES COMPARISON

STANDARD FEATURES

On All Ellison Windows

- Virtually maintenance-free premium vinyl construction.
- Aluminum-reinforced, multi-cavity construction provides additional thermal performance and structural integrity.
- Sloped sill reduces air infiltration, allows easy water run-off.
- Warm-Edge insulated glass system.
- Individually registered product number.
- Dual-fin weather stripping reduces air filtration.
- Fusion-welded sashes and frames.
- Rubber bulb seal helps block outside air.
- White is standard.
- **Transferable, Limited Lifetime Warranty.**

FEATURE	1050	1100	1300	1600	1800
Construction					
Integrated full-length slim-line lift rail	S	S	S	S	S
Block & tackle balance system	S	S			
Constant force coil balance system			S	S	S
InsulKor™ fiberglass-enriched polyurethane reinforcement					S
InsulKor multi-cavity foam-filled frame					O
Night ventilation latches			S	S	S
Window Opening Control Device (for fall prevention)	O		O	O	O
Deluxe cam lock		S	S	S	S
Half screen*	S	S	S	S	O
Full screen*			O	O	S
Locking half-screen*					O
Charcoal aluminum mesh screen*	O	O	O	O	O
Silent Guard with noise control STC 34 performance					O
Aesthetics					
Interior wood laminate (Light Oak, Dark Oak, or Cherry)					O
Exterior Bronze laminate (White interior only)				O	
Exterior Hunter Green, Dark Chocolate, Terratone, Clay, Bronze, Brick Red, Gray or Tan painted colors (White interior only)			O		O
5/8" or 3/4" flat grid	O	O	O	O	O
5/8" or 1" contoured grid	O	O	O	O	O
5/8" or 3/4" diamond grid	O	O	O	O	O
5/8" contoured valance	O	O	O	O	O
1 1/8" simulated divided lite (SDL) grid				O	O
Almond, Dark Chocolate, Cherry, Brass or Brushed Nickel lock					O
Glass					
Low-E Glass	O	O	O	O	O
Low-E Glass with Argon Gas	O	O	O	S	S
Ultra Low-E Glass with Argon Gas	O	O	O	O	O
Triple-pane, R-5 compliant glass with Super Spacer® nXt™ sealant system					O
Beveled glass patterns					O
Leaded glass with brass caming					O
Obscure glass	O	O	O	O	O
Double-strength glass	O	O	O	O	O
Warranties					
Lifetime Glass Breakage Warranty	O	O	O	O	S
25-year Glass Breakage Warranty				S	

S = Standard O = Optional

*Screens are not meant to restrain a child from falling through an open window.



CASEMENT & AWNING Windows

Casement windows range in style from single-vent to 5-lite combinations of fixed and operating units. They open a full 90 degrees, which means the entire window surface can be easily cleaned from within your home. The low-profile handle provides a popular aesthetic appeal. Standard full screens* come on all casement vents, mounted on the inside.

Awning windows are simple to crank, control fresh air flow and open to the outside, keeping the indoors dry even in rain. Each window comes with concealed hinges and operating hardware that ensure a smooth, clean look. A full screen* is standard on all vented units.

Construction highlights of both windows include a beveled frame that encloses Warm-Edge insulated glass, fusion-welded frames and sashes that ensure greater strength and longer wear, and sealed corners that keep air and water out.

Color options: White, Almond

Style options: Interior wood laminate (Light Oak, Dark Oak or Cherry), Bronze exterior laminate and 8 painted exterior colors (on white windows only). See Series 1800 for color options.

Additional STYLES

SLIDER Windows

These practical horizontal windows are available in 2- and 3-lite styles. Solid vinyl frames glide smoothly, and sashes are removable for easy cleaning. Interlocking meeting rails ensure a snug fit. Virtually maintenance-free, our slider windows never need painting.

Color options: White, Almond

Style options: Bronze exterior laminate available on Series 1600. Interior wood laminate (Light Oak, Dark Oak or Cherry), and 8 painted exterior colors (on white windows only) available on Series 1800 only.



GARDEN Windows

A 17 1/2" garden window depth provides a generous area for plants, picture frames or added room space. Garden windows also offer a variety of energy-efficient and maintenance-free features and a roof panel made from safety laminated glass for added protection.

These windows feature a hand-sanded 1 1/4" birch veneer surround and Warm-Edge insulated glass that delivers maximum thermal performance. Side casement vents have conveniently located handles for easy ventilation. A multi-point locking system and corrosion-resistant hardware enhance window security.

Color options: White, Almond

Style options: 5/8" Flat grid, premium quality oak hardwood surround and sill muffler.**



BAY & BOW Windows

Vinyl bay and bow windows enable you to create window seats, breakfast nooks and other options. You can choose from 3- to 5-lites, or select double hung or casement windows to flank a middle picture window. Flankers open to provide ventilation. Double hung flankers are standard. Casement flankers are optional.

Bay and bow windows arrive completely assembled and are simple to install and customize.

Color options: White, Almond

Style options: Bronze exterior laminate available on Series 1600. Interior wood laminate (Light Oak, Dark Oak or Cherry), and 8 painted exterior colors (on white windows only) available on Series 1800 and casements only.



* Screens are not meant to restrain a child from falling through an open window.
** Additional options available.

Additional STYLES



HOPPER Windows

The all-welded Series 600 Basement Hopper Window is available in white with clear glass. The window is available in three stock sizes: 32" x 15 1/2", 32" x 19 1/2", 32" x 23 1/2".

SPECIALTY Shapes

No matter your preference for window styling, Ellison can fulfill it — from classic looks, to sleek and modern lines, to architectural shapes, awnings, picture windows and more.

Color options: White, Almond

Style options: Bronze exterior laminate available on Series 1600. Interior wood laminate (Light Oak, Dark Oak or Cherry), and 8 painted exterior colors (on white windows only) available on Series 1800 only.

GRID Options

Our between-the-panes and raised Simulated Divided Lite grid options provide the classic window appearance homeowners seek and make cleaning simple. Available patterns range from Colonial to Diamond to Prairie and enhance the cosmetic appeal of any home. Choose your pattern from these styles:

- 3/4" or 5/8" flat
- 5/8" or 1" contoured
- 1 1/8" Simulated Divided Lite (SDL) exterior grid (available only with certain series)



1 1/8" Simulated
Divided
Lite Grid

SLIDING Doors

Ellison sliding doors offer you beauty and durability. Made from virgin vinyl compounded and extruded at our factory, our doors will never chip, peel, crack, rot or corrode. They are virtually maintenance-free — wiping clean in moments — and are available in a wide range of glass options and colors.

MULTIPLE GLASS OPTIONS

For Replacement Windows and Doors

With multiple glass options to increase energy efficiency, we have a glass package to fit any climate need or budget.

Low-E Glass

Low-E glass is coated with a microscopic layer of silver that reflects radiant solar energy while permitting visible light to pass through the glass, providing more comfort and lower energy costs.

Low-E Glass with Argon Gas

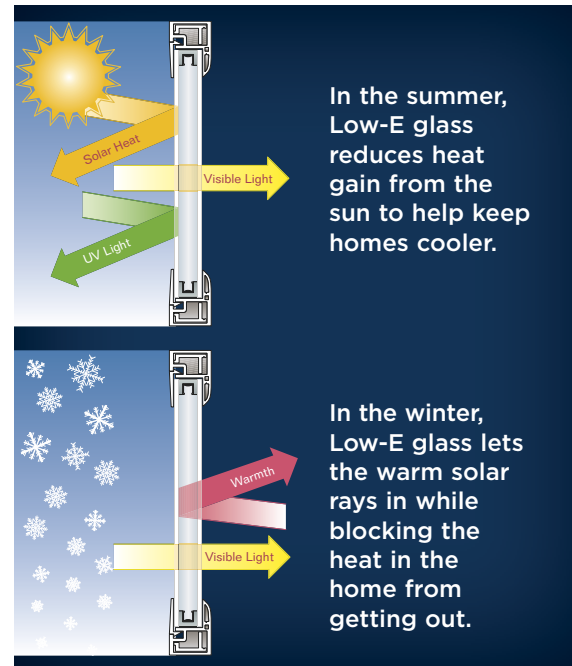
Argon gas works like an insulating blanket between two panes of glass to further improve thermal efficiency and decrease outside sound levels.

Ultra Low-E Glass with Argon Gas

Choose our ultimate glass package for optimal energy efficiency and maximum cost savings. Ultra Low-E glass offers three invisible layers of silver coating in addition to the superior thermal performance of argon gas.

Triple-Pane, R-5 Compliant Glass

Triple-pane, R-5 compliant glass with Super Spacer® nXt™ sealant system provides industry-leading thermal resistance, noise reduction and protection from the sun. The Series 1800 offers this option with both Low-E glass with argon gas or Ultra Low-E glass with argon gas, for the ultimate in insulation.



ENERGY STAR compliance available in all series. Verify product specifics before ordering.

InsulKor™ Technology

InsulKor™ technology is a system of sash and frame enhancements that dramatically improves the performance of the Series 1800 double hung window. Our exclusive InsulKor fiberglass-enriched polyurethane sash reinforcement yields better energy efficiency while maintaining the structural integrity of traditional metal reinforcement.

The optional InsulKor foam injections add thermal-enhancing insulation in specific hollows of the frame. The combination of foam-filled and dead air chambers optimizes each window's thermal properties.

When combined with our R-5 rated, triple-pane glazing systems, these InsulKor enhancements help make the Series 1800 one of the most energy efficient, strongest window systems available today.



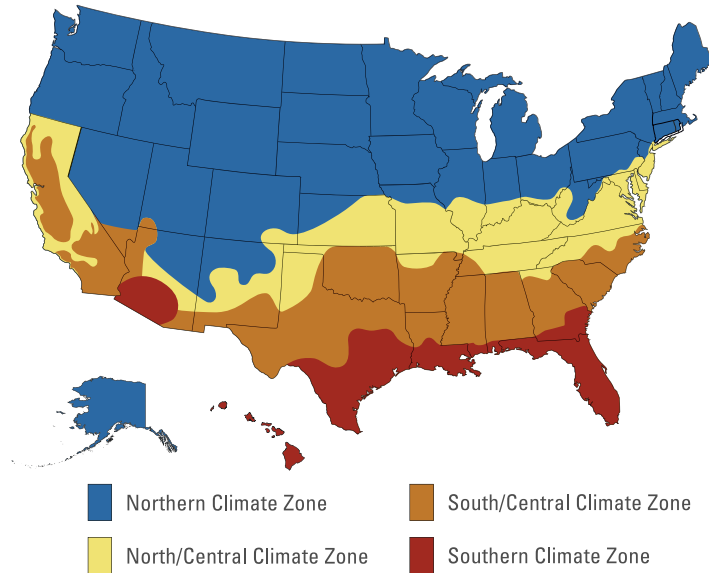
Exclusive InsulKor fiberglass-enriched polyurethane sash reinforcement



Advanced Series 1800 Features

1. Optional InsulKor multi-cavity foam-filled frame injections
2. Super Spacer nXt sealant system (standard with Series 1800 triple-pane glass options, and optional on Series 1800 double-pane windows)
3. Triple-pane, R-5 compliant glass

ENERGY STAR Climate Zone Map



Criteria for Windows

Climate Zone	U-Factor	SHGC	
Northern:	≤ 0.27	Any	Prescriptive
	= 0.28	≥ 0.32	Equivalent Energy Performance
	= 0.29	≥ 0.37	
	= 0.30	≥ 0.42	
North/Central:	≤ 0.30	≤ 0.40	
South/Central:	≤ 0.30	≤ 0.25	
Southern:	≤ 0.40	≤ 0.25	
Air Leakage Rating:		≤ 0.3 cfm/ft ²	

The ENERGY STAR program for windows divides the country into four distinct climate zones to recognize the varying heating and cooling months among the states. For patio doors, there is only one U-Factor and one Solar Heat Gain Coefficient (SHGC) requirement for ENERGY STAR compliance.

Please consult your home improvement or new construction professional for specific thermal properties that vary based on glass options and grid choices, and verify your window's actual performance to ensure ENERGY STAR rating in your specific climate zone.

Criteria for Patio Doors

Glazing Level	U-Factor	SHGC	
≤ 1/2 Lite:	≤ 0.25	≤ 0.25	
> 1/2 Lite:	≤ 0.30	Northern:	≤ 0.40
		North/Central:	≤ 0.40
		South/Central:	≤ 0.25
		Southern:	≤ 0.25
Air Leakage Rating for Sliding Doors:		≤ 0.3 cfm/ft²	

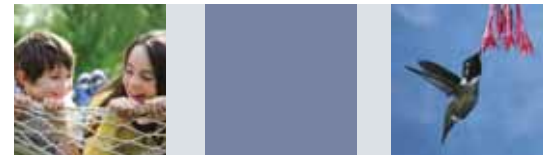
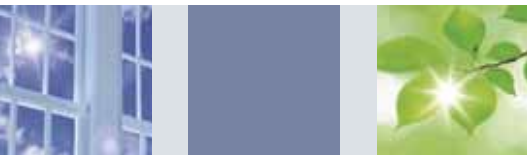


ENERGY STAR compliance available in all series. Verify product specifics before ordering.

Note: Manufacturer reserves the right to substitute components as necessary.

www.ellisonwindows.com

enjoy your view



Proudly Made in the USA 

Scan this QR code to see our manufacturing facility in action.

